



Watchfield Court, London, W4 4NB

£375,000

**WHITMAN & CO.**

SALES · LETTINGS · COMMERCIAL

- Well presented ground floor apartment
- Recently fitted kitchen and bathroom
- Double bedroom with fitted wardrobe
- Spacious reception room
- Extensive communal gardens
- No onward chain

Tenure - Leasehold with Share of Freehold  
 Lease length - 160 years remaining  
 Ground Rent - Peppercorn  
 Service Charge - £4036 pa (includes heating and hot water)  
 Local Authority - Hounslow  
 Council Tax - Band D

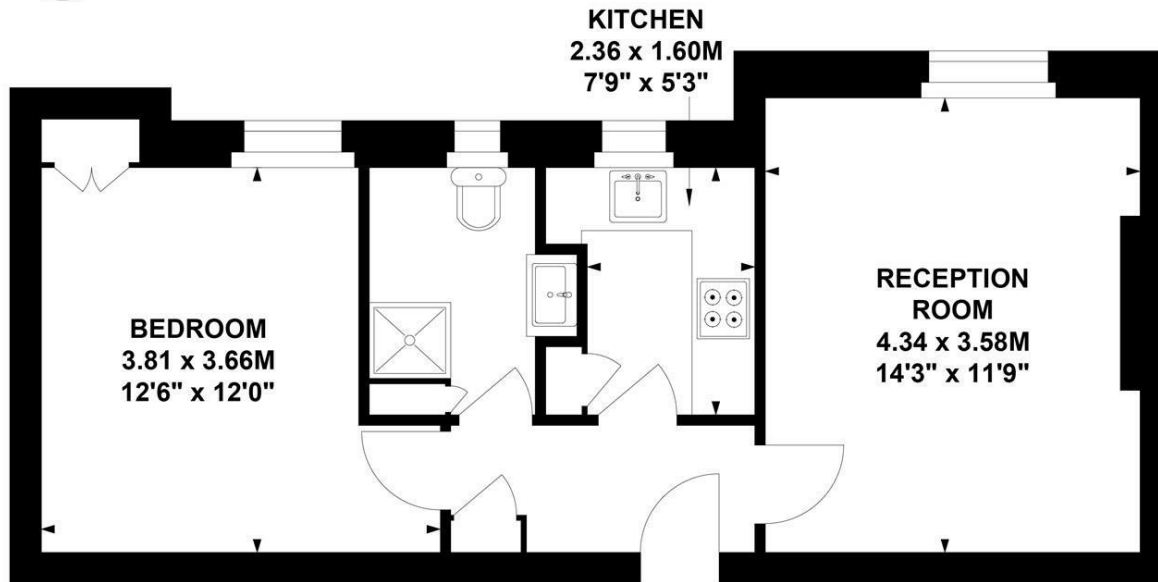
## THE PROPERTY

An immaculately presented ground-floor apartment situated within this popular, centrally located, mansion block, with attractive, well-maintained communal gardens. The accommodation comprises a spacious double bedroom with fitted wardrobe, modern shower room, recently fitted kitchen, reception room, entrance hall, communal heating and hot water, residents off street parking, extensive communal grounds and gardens and an estate manager. Ideally located just off Turnham Green offering close proximity to Chiswick High Road's shops, cafes and restaurants. Transport links include Chiswick Park and Turnham Green stations, local bus routes and the A4/M4 for routes in and out of London. No onward chain.

## Watchfield Court, W4

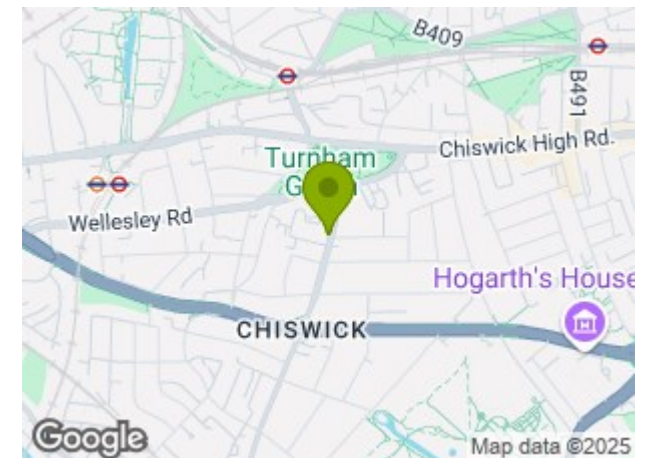
Approximate Gross Internal Area  
**43.82 sq m / 471 sq ft**

Key :  
 CH - Ceiling Height



Not to scale, for guidance only and must not be relied upon as a statement of fact.  
 All measurements and areas are approximate only

## SITUATION



5-7 Turnham Green Terrace, Chiswick, London, W4 1RG

Tel 020 8747 8800

E-mail [sales@whitmanandco.com](mailto:sales@whitmanandco.com)

Website [www.whitmanandco.com](http://www.whitmanandco.com)